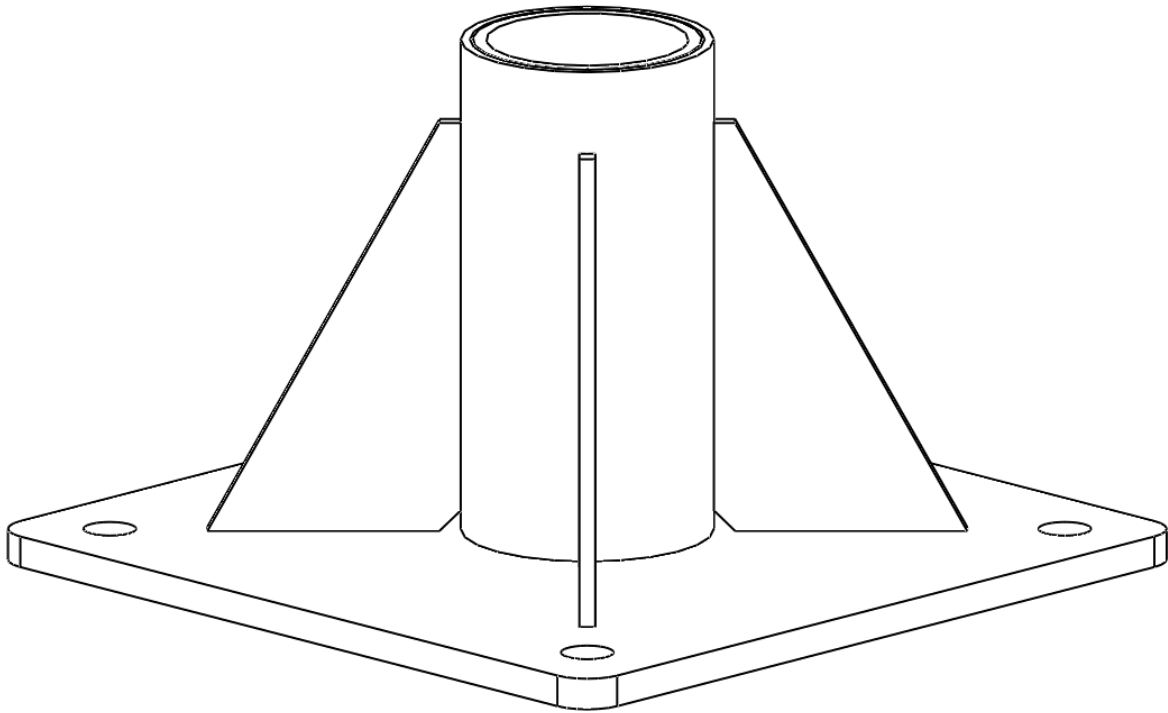


SURFACE MOUNT ANCHOR

Part Number 75521



7100 Spectrum Lane | Missoula MT 59808 | 800.791.8056 | www.spectrumproducts.com
© 2013 EverActive Brands™

75521 Man Rev A

You have purchased a Spectrum Products Surface Mount Anchor for the Freedom/Aspen lift. Providing the unit is installed correctly and properly maintained, it will furnish you with many years of trouble free use. It is important to read this entire manual prior to beginning assembly or operation.

Shipping Information:

Each anchor will arrive fully assembled in one package. Before accepting the anchor from the carrier, inspect for visible damage and match the contents with those listed below. Spectrum is not responsible for lost or damaged freight.

1	Surface mount anchor
---	----------------------

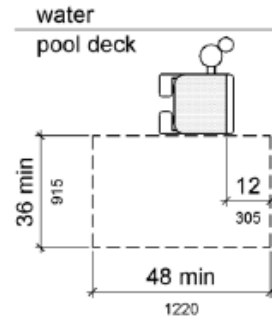
Installation Overview

Clear Deck Space:

To be compliant with ADA guidelines, the lift must be installed in a location that is clear from obstacles and other hazards. Clear deck space is defined by the figure to the right. This rectangle is 48" long (along the pool wall) and 36" wide.

Pool/Spa Depth:

To comply with ADA guidelines the lift must be installed where the water depth does not exceed 48". If the entire pool is deeper than 48" this requirement does not apply.



Anchor Location/Installation:

The lift anchor centerline must be no less than 6", but no greater than 22" from the pool/spa wall (or any feature that sticks out past the pool/spa wall, such as a coping). The lift is installed in a single 2.375" I.D. anchor.

Existing Facility Anchor Installation

There are many different configurations of footing shapes and sizes to resolve the forces of the lift; a general case footing that has been calculated for Spectrum is a minimum slab 2'6" square by 10" thick anchor centered, with a minimum of four #4 bars each way centered. An engineer stamped letter can be furnished by Spectrum if requested.

- a. From the center of the desired anchor location, using a marking pen or chalk, mark a square of the dimensions provided by Spectrum Aquatics, or another engineer stamped footing. This is the concrete to be removed to accommodate the installation of the lifts anchor. It is recommended that the anchor be located at least 6" from any expansion joint, crack, drain, or similar structure in the concrete deck.
- b. Use a concrete cutting saw, cut the square out of the existing concrete deck. Using a heavy/sledge hammer to break the cut section of concrete – remove the section of concrete from the deck. See Figure 1.

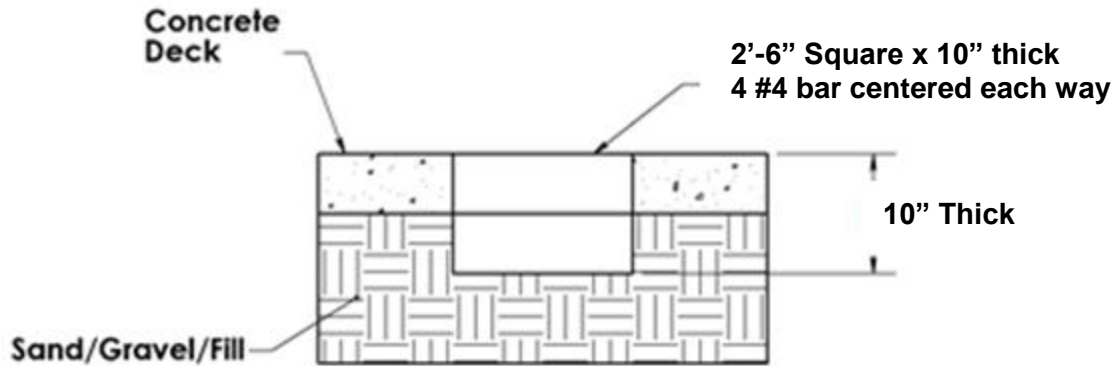


Figure 1

- c. Locate a bonding source to bond the anchor. The steel rebar-bonding grid of the pool deck is the best choice for bonding the anchor. Attach a No. 8 solid copper wire (NEC Section 680-22) from the bonding bolt on the base of the anchor to the bonding grid.

Note: If the concrete deck is 8" thick or more, or this method is deemed acceptable by examination, an alternative anchor installation method may be used. In lieu of saw cutting the concrete deck, the anchor may be installed directly onto the deck. This is accomplished using the included drop-in anchors. Make sure the anchor is properly bonded.

Allow the concrete/grout/epoxy to cure for at least 7-days (or manufacturer recommended set time) before installing and using the anchor.

- d. Use a carpenter's level to level the anchor making sure that the Aspen II mast will be vertically straight - up and down (perpendicular to the deck) in all directions. It is important that the mast be vertically straight to ensure ease of rotation when the lift is fully loaded
- e. With anchor in level position on deck, mark location for mounting hardware. (Spectrum recommends the use of Hilti PN (00339621) or similar stainless steel drop in anchor that will accept 3/4" stainless steel hardware.
- f. Anchors should be installed according to the manufacturer instructions.
- g. A bonding lug is supplied with each anchor. Attach the #8 copper wire to the bonding lug.

Troubleshooting

Please contact your local distributor or Spectrum Customer Service (406.532.6321) for assistance, or, to order parts.